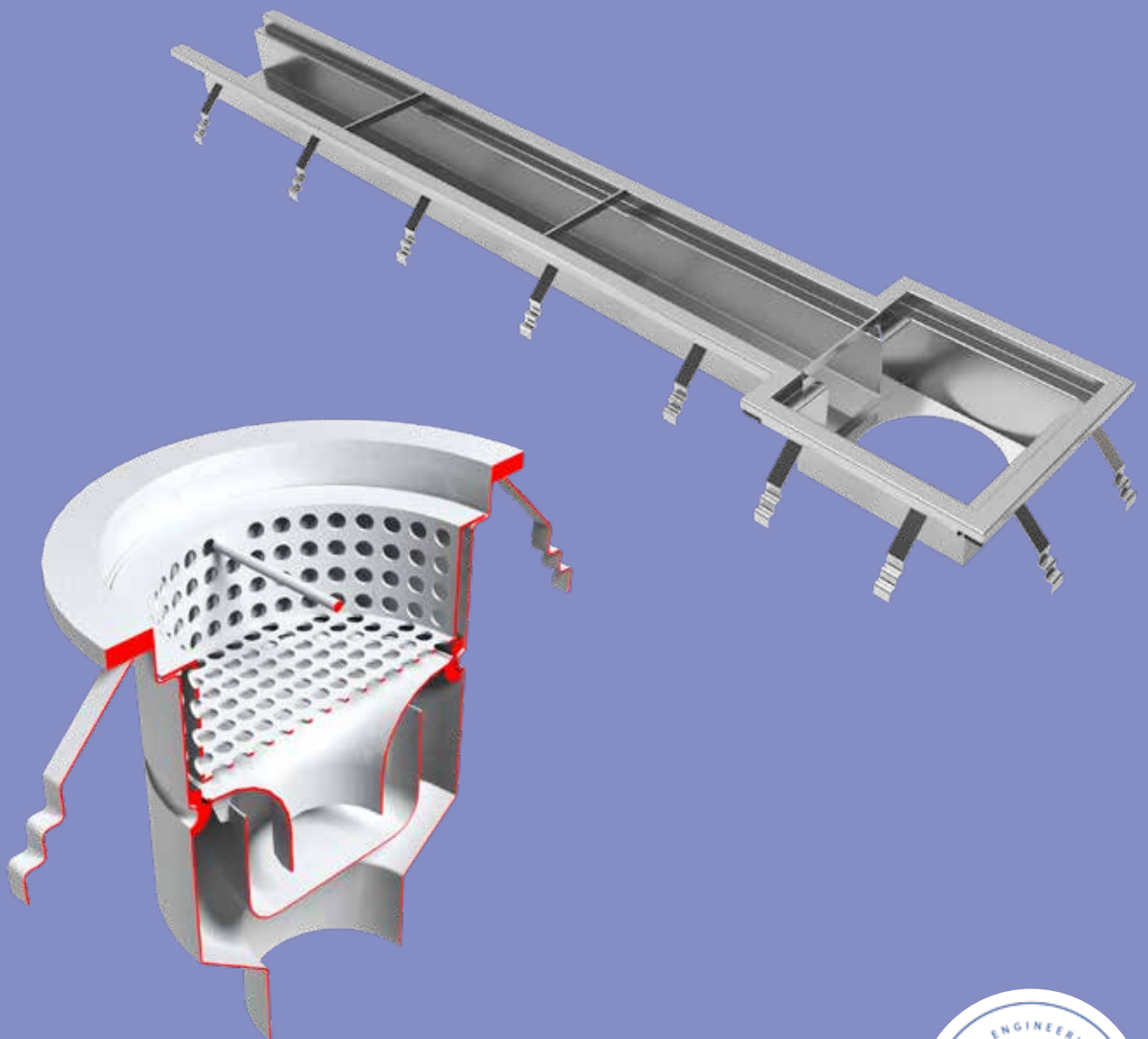


Hygienic Drainage





Aspen Fabrications

Aspen Fabrications is a trusted UK manufacturer specialising in high-performance stainless-steel drainage, kerbing and protection systems, designed and built at our facility in Derbyshire and installed throughout the UK.

With a strong reputation for quality, hygiene compliance and innovation, we serve critical sectors including food, pharmaceutical and healthcare. But our expertise extends well beyond drainage.

With decades of fabrication experience and cutting-edge in-house capabilities, we deliver bespoke metalwork fabrication and volume manufacturing for diverse industrial projects and sectors, large or small.

From modular drainage systems engineered to the highest EHEDG and BS standards, to tailored fabrication solutions built around your requirements, Aspen combines technical precision with end-to-end service, whether you need a single component or a full turnkey solution.



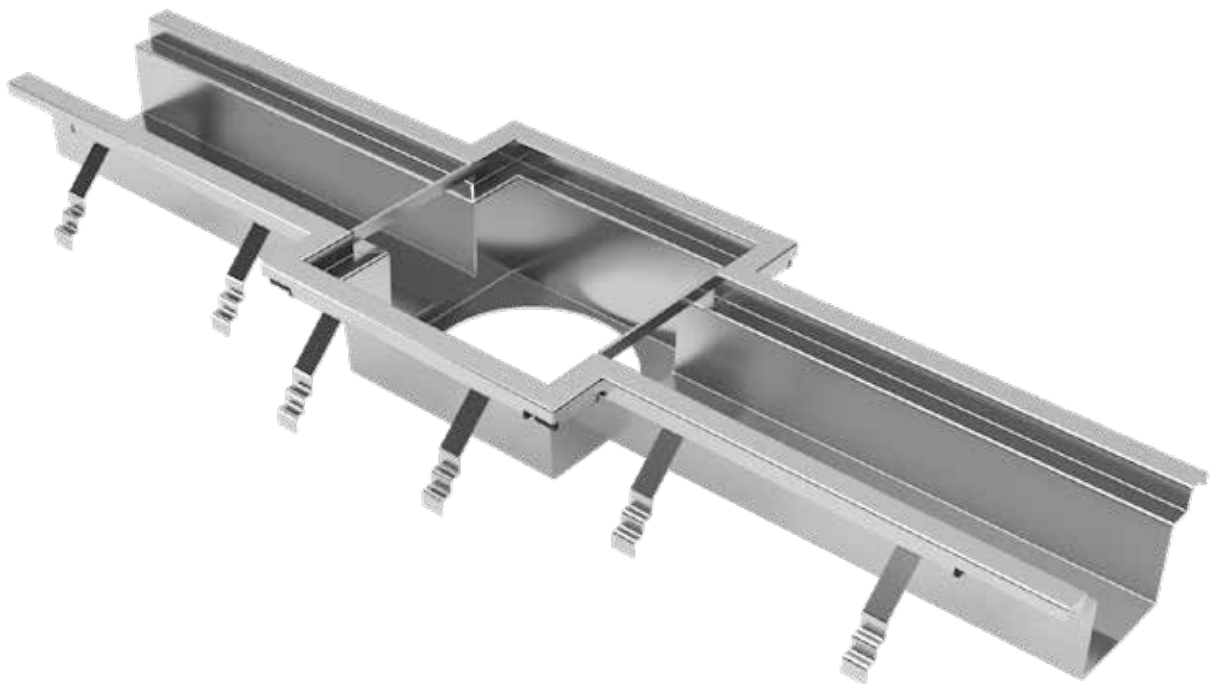
As EHEDG members we follow the hygienic design and engineering principles of the association to ensure all of our stainless-steel drainage and kerbing solutions are manufactured according to the latest food safety guidance.

Introducing Aspen's Drainage Range

Aspen offers a premium range of stainless steel drainage solutions designed for industries where hygiene is paramount, including food processing, pharmaceuticals and healthcare. Engineered to meet the highest European standards - BS EN1433:2002 and BS EN1253-1:2015 - our drainage system also aligns with EHEDG principles for superior sanitation.

Modular by Design, Engineered to Last

Developed over two years in collaboration with industry experts, Aspen's UK manufactured modular drainage system is built for ultimate hygiene, durability and flexibility. Leveraging aerospace manufacturing technology, a seamless design and EPDM seals, it ensures easy installation, reduced lead times and lasting performance.



Constructed from high-grade 304 stainless steel, our drainage solutions are designed to withstand the demands of heavy use and exposure to harsh cleaning chemicals, ensuring long-term durability and compliance with the most rigorous hygiene requirements. With over three decades of craftsmanship and cutting-edge manufacturing expertise, our system delivers exceptional strength and ease of maintenance.

Competitively priced and easy to order, Aspen's drainage solution comes with nationwide delivery and is the trusted choice for architects and clients, providing a seamless fit for every project.

Features and Benefits

Hygienic by Design

- Gradient base ensures efficient water flow for a self-draining system
- Eliminates standing water to prevent bacterial growth
- Fully radiused corners reduce debris buildup for enhanced hygiene
- Complies with EHEDG principles for superior sanitary performance

Easy Maintenance & Servicing

- Cleanable and 'roddable' design for effortless upkeep
- Easily removable covers and access points for quick inspections
- Water-free traps that can be removed for thorough cleaning
- Ensures efficient maintenance in demanding environments

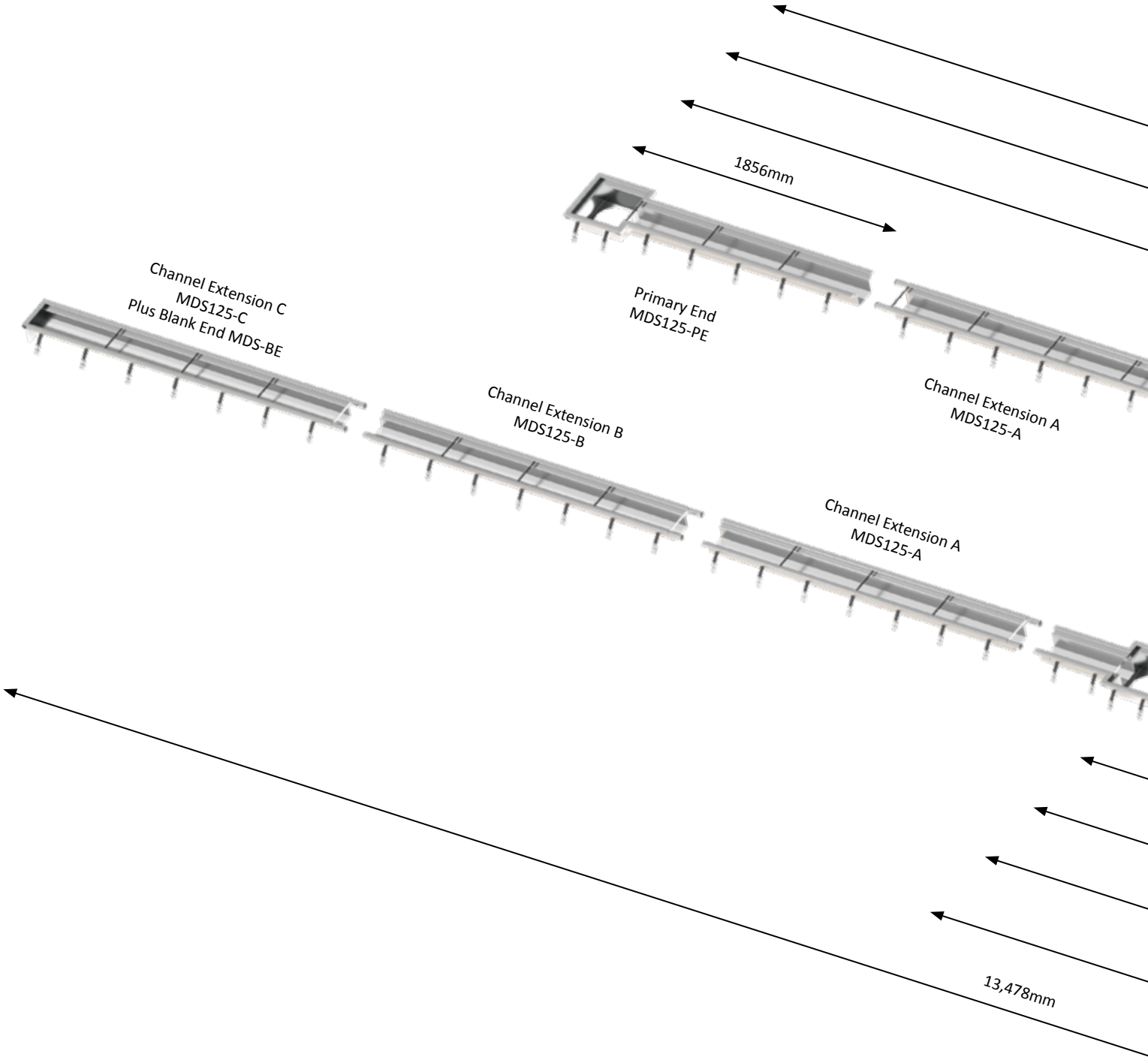


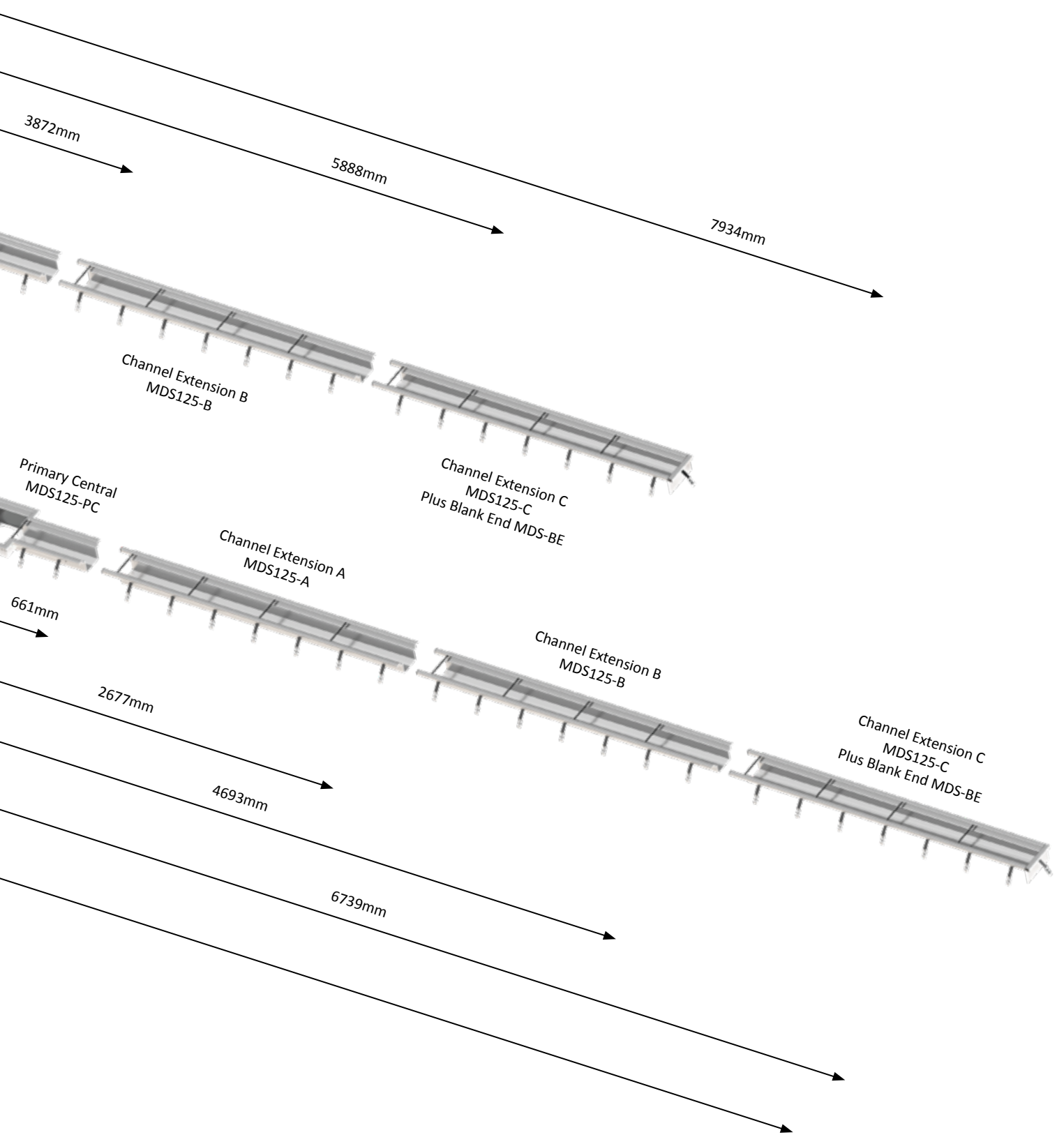
A New Standard in Drainage Solutions

Aspen's drainage system showcases the power of innovation in design and manufacturing. By embracing modularity, we deliver a solution that is not only efficient and sustainable but also highly customer-focused. This system represents a significant milestone, reinforcing Aspen's reputation as a leader in modular design and manufacturing while redefining client expectations for functionality, customisation and value.

Together, we're shaping a future driven by innovation and excellence.

Modular by design, Engineered to last





How It Works

Designed for Architects. Delivered without Compromise.

1. Start with Aspen's Architect's Toolkit

Aspen's Modular Hygienic Drainage System has been designed specifically for architects and designers.

Through our online Architect's Toolkit, you can:

- Download fully detailed DWG CAD files
- Drag and drop modular components into your layout
- Build the exact drainage run within your drawing model
- Generate an accurate Bill of Materials (BOM)



2. Build Your Drainage Run

Using Aspen's modular components such as:

- Primary End
- Channel A
- Channel B
- Channel C
- Blank End Plate

Simply drag and drop modules together to create your required drainage layout. The Aspen system is modular, you are not restricted to fixed lengths

3. Trim to Exact Specification

Here's where Aspen **differs**.

If your final section needs to be shorter to achieve the precise overall drainage run, simply trim the final Channel (e.g. Channel C) to your exact required dimension.

Finally, simply add a Blank End Plate to complete your run.

- Exact length**
- Exact fall**
- No redesign required**

A drainage system that works around your building, not the other way around.

From Drawing to Installation - Seamlessly

1 Design your drainage run using Aspen CAD files

2 Determine your exact drainage run specifications

3 Design your drainage run using Aspen CAD files



Two Supply Options. The Right Fit For Every Project.

Once your drainage layout is complete, Aspen offers two supply approaches depending on the requirements of your project, installation preferences and site constraints.

Modular Supply for Site Welding

Ideal where site access, transport limits or installation sequencing require maximum flexibility.

We supply the individual modular drainage components which are assembled and welded together by your installation team on site.

- Maximum flexibility for complex layouts
- Suitable for very long drainage runs without transport restrictions
- Easier delivery to restricted access or phased construction sites
- Fast availability with short lead times
- Simple to order directly through Aspen's online store
- Modular components allow adjustments during installation
- Trusted installation method widely used across commercial drainage projects

Aspen Bespoke Pre-Welded Delivery

For projects where installation speed, quality control and programme certainty are the priority. Send Aspen your approved drainage layout and Bill of Materials (BOM) and we will fabricate the full drainage run to your exact final dimensions.

Our Process:

- Fabricate the drainage run to your final layout
- Fully TIG weld in controlled factory conditions
- Pickle and passivate all welds
- Quality check and apply protective wrapping
- Deliver to site ready for installation*

This ensures:

- Factory controlled quality
- Faster installation
- Reduced programme risk
- Minimal site welding
- Full hygienic compliance

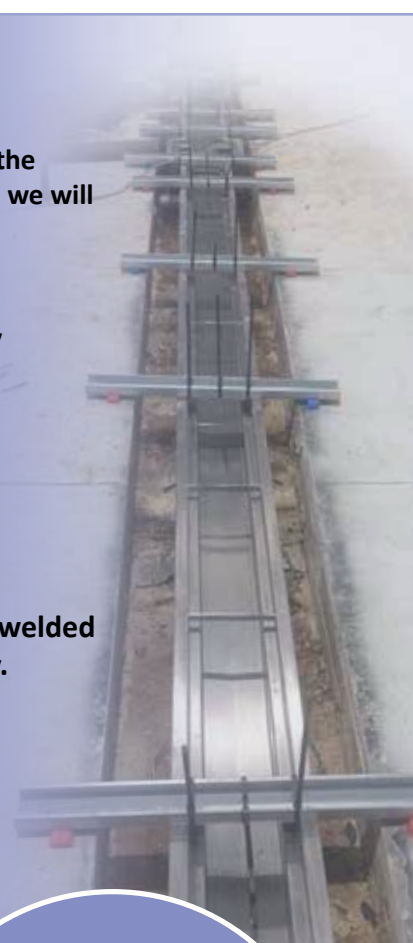
*Subject to transport constraints.

Where drainage layouts exceed transport limitations, Aspen can supply part-welded sections to minimise on-site welding while maintaining installation efficiency.

Simply designed.

Precision manufactured.

Installation ready.



4 Aspen manufactures your complete welded unit(s)

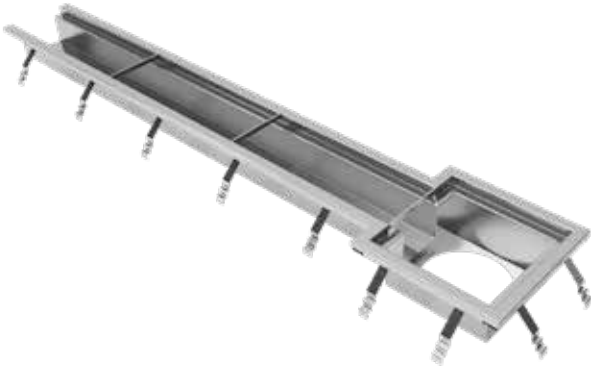
5 Drain delivered ready to install

Factory Welded
Pickled & Passivated.
Delivered ready
to install

Drain Channels

MDS125-PE

Primary End - c/w Cell Bars, Structural/Locating Bars & Concrete Tiles



Primary End

- **Connects with Channel A only**
- 125mm internal width
- 1,856mm overall length
- Start invert: 115mm
- End invert (inc. Type A outlet): 437mm
- End invert (inc. Type B outlet): 332mm

MDS125-A

Channel A - c/w Cell Bars, Structural/Locating Bars & Concrete Tiles



Channel Extension A

- **Channel A is compatible with Primary End, Primary Central, Primary Tee and Primary 90 products only**
- 125mm internal width
- 2,016mm overall length
- Start invert: 102mm
- End invert: 115mm

MDS125-B

Channel B - c/w Cell Bars, Structural/Locating Bars & Concrete Tiles



Channel Extension B

- **Channel B is compatible with Channel A only**
- 125mm internal width
- 2,016mm overall length
- Start invert: 88mm
- End invert: 102mm

MDS125-C

Channel C - c/w Cell Bars, Structural/Locating Bars & Concrete Tiles



Channel Extension C

- **Channel C is compatible with Channel B only**
- 125mm internal width
- 2,046mm overall length
- Start invert: 75mm
- End invert: 88mm

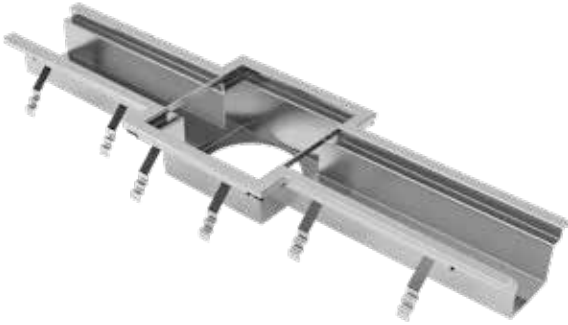
Drain Channels

Features:

- Manufactured from 2mm 304 stainless steel
- Internal radiused corners and seamless joints in line with EHEDG guidance

MDS125-PC

Primary Central - c/w Cell Bars, Structural/Locating Bars & Concrete Tiles



Primary Central

- **Connects with Channel A only**
- 125mm internal width
- 1,332mm overall length
- Start invert: 115mm
- End invert (inc. Type A outlet): 437mm
- End invert (inc. Type B outlet): 332mm

MDS125-PT

Primary Tee - c/w Cell Bars, Structural/Locating Bars & Concrete Tiles



Primary Tee

- **Connects with Channel A only**
- 125mm internal width
- 1,332mm x 848mm overall lengths
- Start invert: 115mm
- End invert (inc. Type A outlet): 437mm
- End invert (inc. Type B outlet): 332mm

MDS125-P90

Primary 90° - c/w Cell Bars, Structural/Locating Bars & Concrete Tiles



Primary 90°

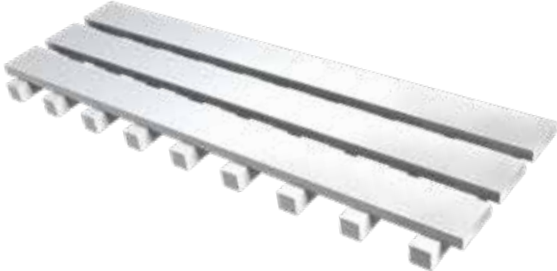
- **Connects with Channel A only**
- 125mm internal width
- 848mm x 848mm overall lengths
- Start invert: 115mm
- End invert (inc. Type A outlet): 437mm
- End invert (inc. Type B outlet): 332mm

Drain Channel Covers

Features:

- Crevice-free design featuring seamless joints in line with EHEDG guidance
- Offered with market-leading load ratings, tested in accordance with BS EN 1433:2002
- Slip-resistant media blasted finish
- Manufactured in 500mm lengths for ease of removal and maintenance

MDT3B-HD	Drain Cover 3 Bar Flat (500mm) - Heavy Duty
-----------------	--



Load Class (BS EN 1433): B125 (196kN)

MDT3B-SD	Drain Cover 3 Bar Flat (500mm) - Standard Duty
-----------------	---



Load Class (BS EN 1433): B125 (132kN)

MDTL-SD	Drain Cover Ladder (500mm) - Standard Duty
----------------	---



Load Class (BS EN 1433): B125 (125kN)

MDTL-SR	Drain Cover Ladder Serrated (500mm) - Standard Duty
----------------	--



Load Class (BS EN 1433): B125 (125kN)

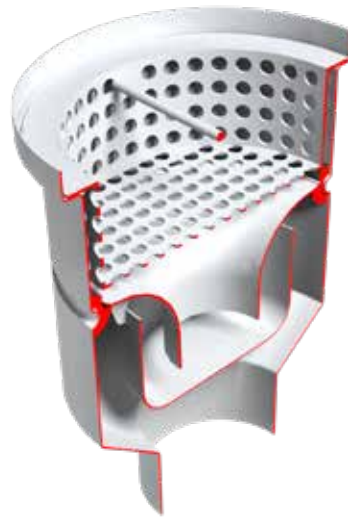
Outlets

Features:

- Self-draining design, removable 50mm foul air trap (FAT)
- Manufactured from 304 stainless steel
- Featuring internal radiused corners and seamless joints in line with EHEDG guidance
- Internal trash basket featuring $\varnothing 10\text{mm}$ perforations
- Bespoke injection-moulded EPDM seal, resistant to extreme heat and harsh chemicals
- 110mm diameter outlet

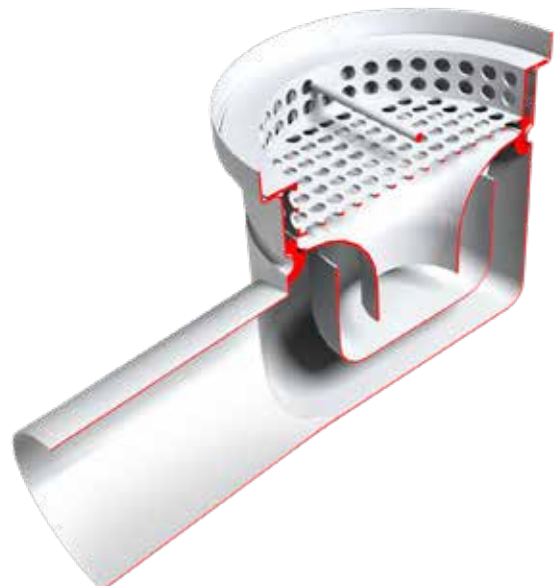
MDO110-A

Drain Outlet Type 'A' c/w 110mm Bottom Outlet incl Foul Air Trap (FAT) & Trash Basket



MDO110-B

Drain Outlet Type 'B' c/w 110mm Side Outlet incl Foul Air Trap (FAT) & Trash Basket



Gullies & Covers

Features:

- Crevice-free design featuring seamless joints in line with EHEDG guidance
- Manufactured from 304 stainless steel
- Slip-resistant media blasted finish
- Featuring key slots to aid removal and maintenance
- Covers offered with market-leading load ratings, tested in accordance with BS EN 1253

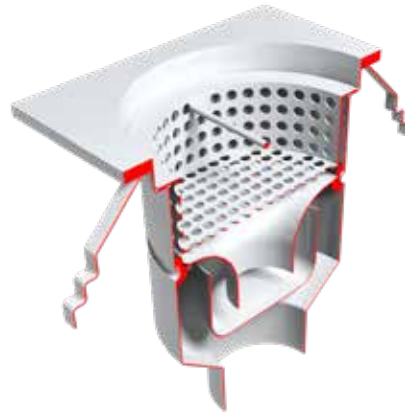
MSG110-AR

Spot Gully Type 'A' c/w 110mm Bottom Outlet Round Flange incl Foul Air Trap (FAT) & Trash Basket



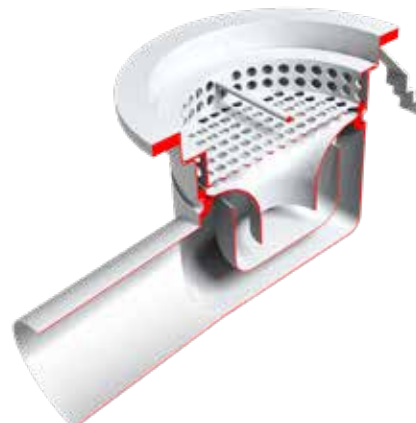
MSG110-AS

Spot Gully Type 'A' c/w 110mm Bottom Outlet Square Flange incl Foul Air Trap (FAT) & Trash Basket



MSG110-BR

Spot Gully Type 'B' c/w 110mm Side Outlet Round Flange incl Foul Air Trap (FAT) & Trash Basket



Gullies & Covers

MTT-S

Gully Tundish Cover - Solid



- Provides visible air gap for hygienic waste discharge
- Directs flow efficiently into gully, reducing splash and spillage
- Solid cover suits controlled discharge, preventing debris entering system

MTT-L

Gully Tundish Cover - Ladder



- Provides visible air gap for hygienic waste discharge
- Directs flow efficiently into gully, reducing splash and spillage
- Ladder cover allows high flow from floor washdown areas

MGT-S

Gully Cover - Solid



- Solid cover suits controlled discharge, preventing debris entering system
- Load Class (BS EN 1253): N250kN
- Cover lifting key available

MGT-L

Gully Cover - Ladder



- Ladder cover allows high flow from floor washdown areas
- Load Class (BS EN 1253): N250kN
- Cover lifting key available

Accessories

MFT

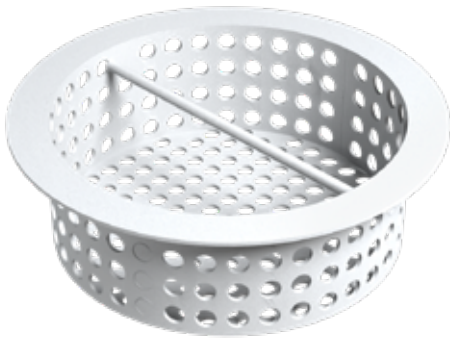
Foul Air Trap (FAT) - 304 Stainless Steel



- Compatible with all Modular Outlets and Gullies
- Hygienic, fully radiused internal corners and seamless joints

MTB-A

Trash Basket (Type A) - 304 Stainless Steel



- Compatible with all Type A (bottom) Modular Outlets and Gullies
- Features 10mm diameter perforations and an integrated handle to aid maintenance
- Hygienic seamless welded joints

MTB-B

Trash Basket (Type B) - 304 Stainless Steel



- Compatible with all Type B (side) Modular Outlets and Gullies
- Features 10mm diameter perforations and an integrated handle to aid maintenance
- Hygienic seamless welded joints

ASP-RS

Rubber (EPDM) Seal



- High-quality EPDM rubber provides a tight, reliable seal within our gullies and outlets
- Designed to withstand aggressive cleaning regimes, chemicals and fluctuating temperatures
- Resistant to cracking and deformation, ensuring minimal maintenance or replacement

Installation Accessories

MCHB-700

Channel Hanger Bar (700) - Galvanised Steel c/w Cable Ties (3) & Fixings (2)



- Compatible with all Modular Drain Channels
- For drainage channels within narrow trenches (up to 540mm wide)
- Kit includes heavy duty cable ties and hammer fixings

MCHB-1250

Channel Hanger Bar (1250) - Galvanised Steel c/w Cable Ties (3) & Fixings (2)



- Compatible with all Modular Drain Channels
- For drainage channels within wide trenches (up to 1090mm wide)
- Kit includes heavy duty cable ties and hammer fixings

MS

Stilt Kit - 304 Stainless Steel c/w Fixings (2)



Compatible with all Modular Drain Channels.
Note this product requires welding and should be carried out by a competent person to ensure optimum performance.

MDS-BE

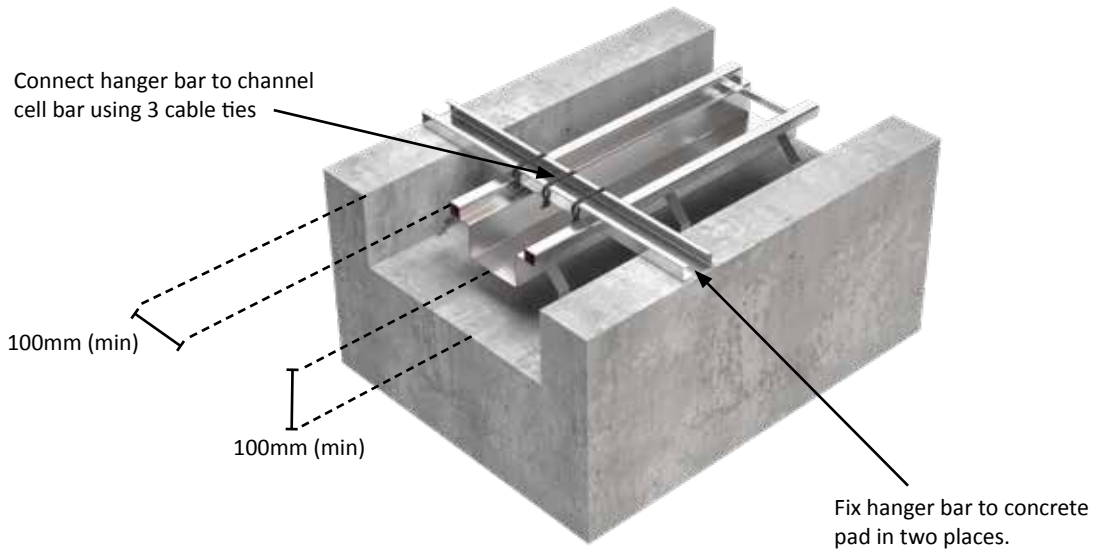
Drain Section Blank End



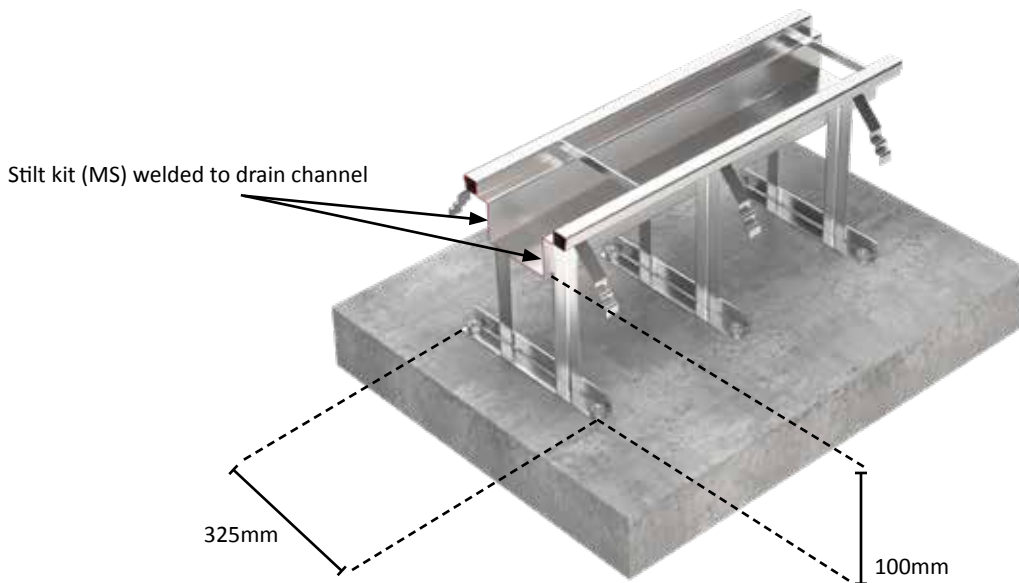
- Available loose or pre-welded as part of our bespoke offering
- Enables simple shortening of channel runs to suit your layout

Installation Guidance

Drainage installation using Hanger Bars



Drainage installation using Stilts



Bespoke Design & Installation – Total Responsibility in Action

We specialise in the high-volume production of sheet metal components, providing cost effective pricing and rapid delivery times. Our advanced manufacturing processes are optimised for large-scale production, ensuring consistent quality across all items. Clients benefit from our streamlined stocking system, allowing for efficient inventory management and reduced lead times.

For more information visit our website www.aspen-fabrications.co.uk





5A & 5B Bradley Park, High Holborn Road, Ripley DE5 3NW

+44 (0) 1773 851 997

enquiries@aspen-fabrications.co.uk

www.aspen-fabrications.co.uk



Certificate Number 13953
ISO 9001, ISO 14001,
ISO 45001