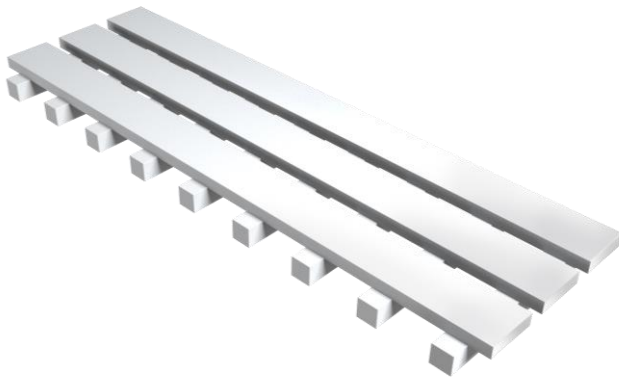


ASP-MDT3B-HD Modular Drain Cover 3 Bar Flat (500mm) – Heavy Duty

Product Description

- Aspen MDT3B Heavy Duty drain covers are suitable for medium load factory traffic environments where hygiene is key.
- Manufactured in 500mm standard lengths for easy access, cleaning, rodding and maintenance of the drain channel.
- Customisable sizes on request.



Key Benefits

MDT3B Heavy Duty drain covers provide maximum liquid drainage to the channel while preventing large debris from entering the wastewater, coupled with a robust, slip resistance surface to withstand factory traffic loads.

Technical Specification

- **Crevice free** design featuring seamless joints in line with EHEDG guidance.
- **Load Class B125** (196Kn tested) in accordance with BS EN 1433.
- **Horizontal supports:** 10mm x 40mm stainless steel.
- **Cross supports:** 16mm x 16mm stainless steel.
- **Slip resistant finish:** Glass Bead Blasted 150-250 MIC.
- **Manufactured:** In 500mm lengths for ease of removal.
- **Supplied:** In standard Grade 304 stainless steel. Grade 316 available on request.
- **Compatible:** With Aspen Modular drain channels.

MODEL	REF	DIMENSIONS (mm)		
		Length	Width	Depth
Modular Drain Cover 3 Bar Flat – Heavy Duty	ASP-MDT3B-HD	496	171	26

Maintenance

Stainless steel equipment should be occasionally thoroughly checked for retained deposits and concentrated fluid build-up that causes corrosion.

Cleaning

Many factors affect the choice of cleaning method and frequency of its application. Suitable methods for stainless steel are water and steam; mechanical non-abrasive scrubbing; organic solvents and mild detergents.

Bespoke Design & Installation

At Aspen Fabrications, we continue to uphold the principle of “Total Responsibility” - a legacy built on quality, precision and complete customer confidence. While our stainless-steel drainage systems are designed with modularity at its core, we understand that not every project fits a standard template. That’s why we offer a bespoke design and installation service - a flexible, turnkey solution for clients who require tailored drainage systems for complex or high-performance environments. Visit our website for further details.

Aspen Fabrications
01773 851 997
www.aspen-fabrications.co.uk
enquiries@aspen-fabrications.co.uk

