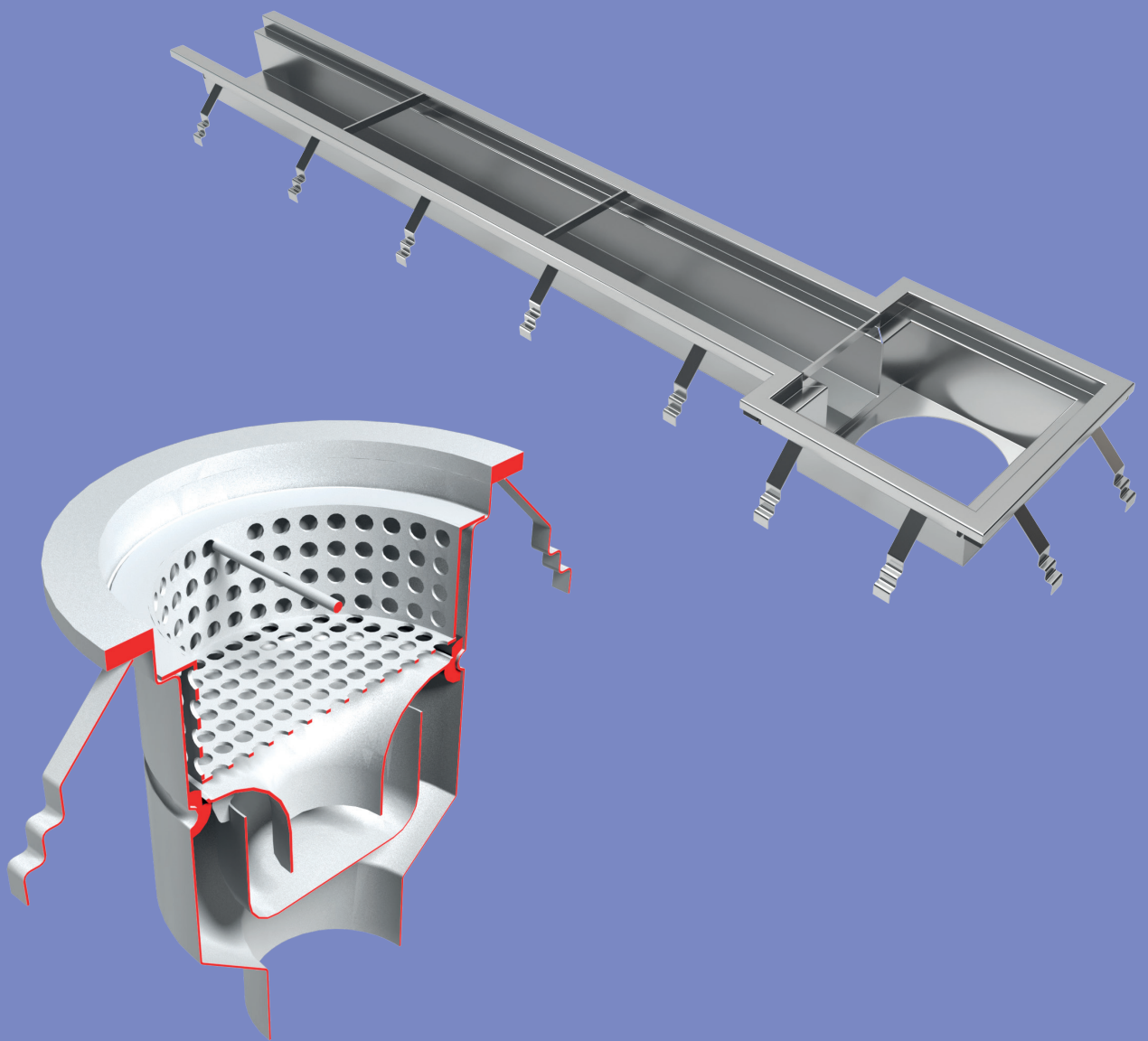


Modular Drainage

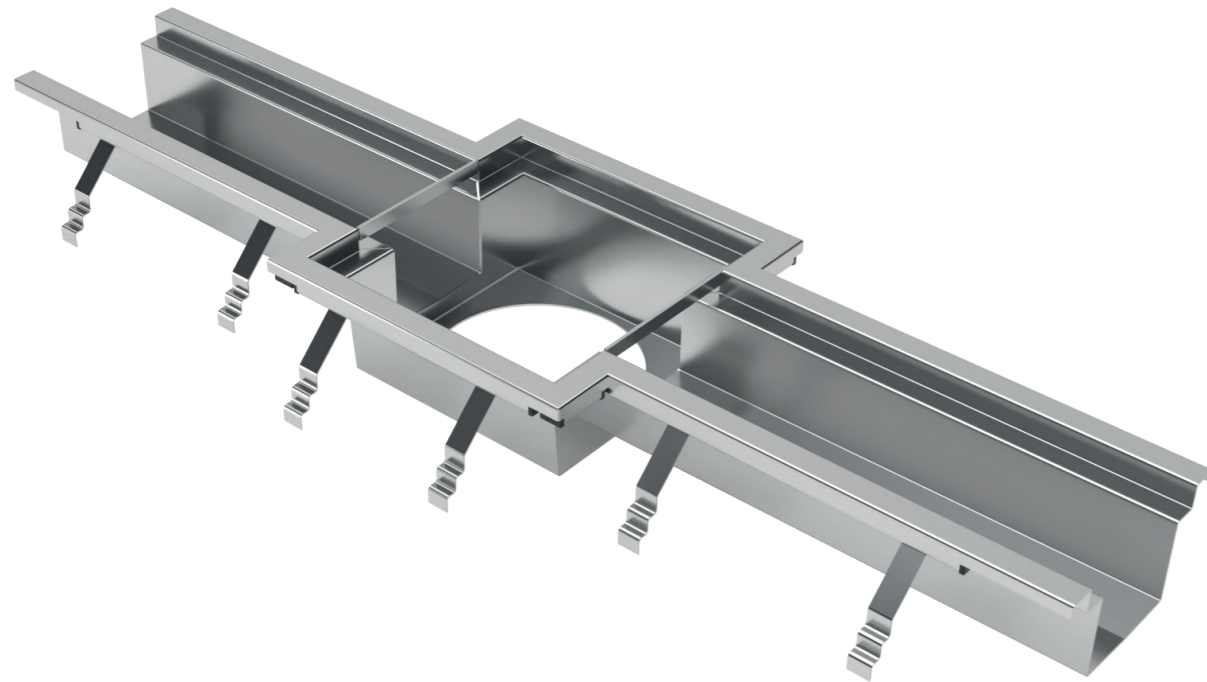


Introducing Aspen's Drainage Range

Aspen offers a premium range of stainless steel drainage solutions designed for industries where hygiene is paramount, including food processing, pharmaceuticals and healthcare. Engineered to meet the highest European standards - BS EN1433:2002 and BS EN1253-1:2015 - our drainage system also aligns with EHEDG principles for superior sanitation.

Modular by Design, Engineered to Last

Developed over two years in collaboration with industry experts, Aspen's UK manufactured modular drainage system is built for ultimate hygiene, durability and flexibility. Leveraging aerospace manufacturing technology, a seamless design and EPDM seals, it ensures easy installation, reduced lead times and lasting performance.



Constructed from high-grade 304 stainless steel, our drainage solutions are designed to withstand the demands of heavy use and exposure to harsh cleaning chemicals, ensuring long-term durability and compliance with the most rigorous hygiene requirements. With over three decades of craftsmanship and cutting-edge manufacturing expertise, our system delivers exceptional strength and ease of maintenance.

Competitively priced and easy to order, Aspen's drainage solution comes with nationwide delivery and is the trusted choice for architects and clients, providing a seamless fit for every project.

Features and Benefits

Hygienic by Design

- Gradient base ensures efficient water flow for a self-draining system
- Eliminates standing water to prevent bacterial growth
- Fully radiused corners reduce debris buildup for enhanced hygiene
- Complies with EHEDG principles for superior sanitary performance

Easy Maintenance & Servicing

- Cleanable and 'roddable' design for effortless upkeep
- Easily removable covers and access points for quick inspections
- Water-free traps that can be removed for thorough cleaning
- Ensures efficient maintenance in demanding environments

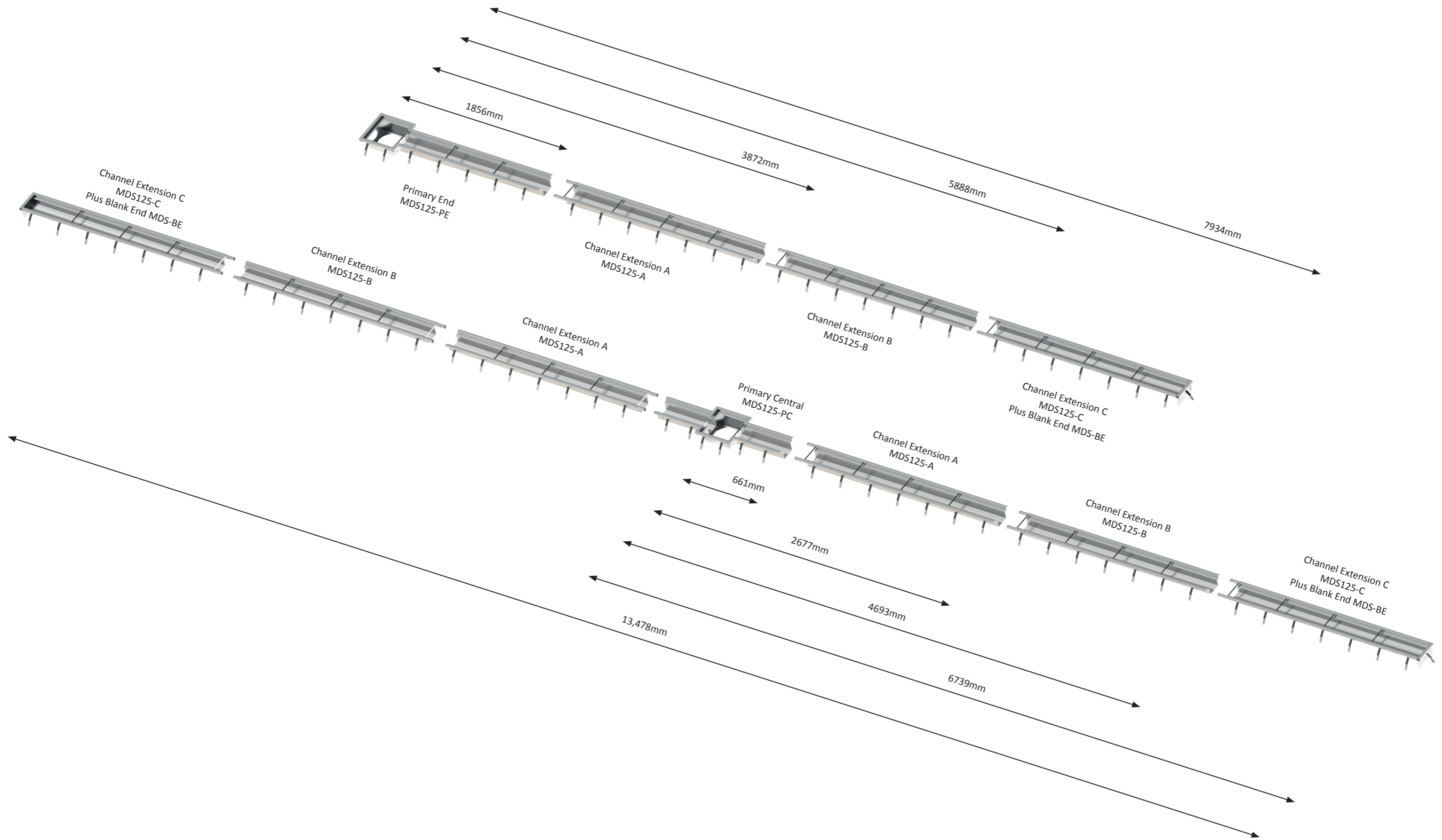


A New Standard in Drainage Solutions

Aspen's drainage system showcases the power of innovation in design and manufacturing. By embracing modularity, we deliver a solution that is not only efficient and sustainable but also highly customer-focused. This system represents a significant milestone, reinforcing Aspen's reputation as a leader in modular design and manufacturing while redefining client expectations for functionality, customisation and value.

Together, we're shaping a future driven by innovation and excellence.

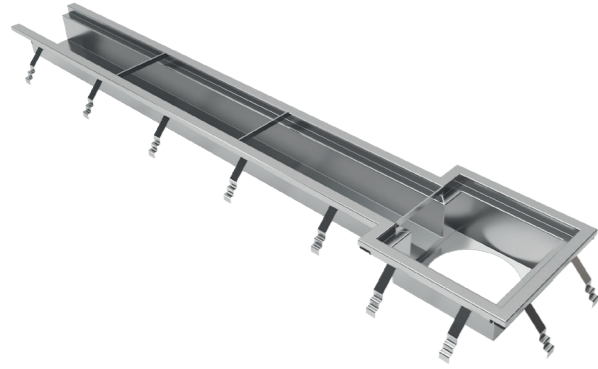
Modular by design, Engineered to last



Drain Channels

MDS125-PE

Primary End - c/w Cell Bars, Structural/Locating Bars & Concrete Tiles



Primary End

- **Connects with Channel A only**
- 125mm internal width
- 1,856mm overall length
- Start invert: 115mm
- End invert (inc. Type A outlet): 437mm
- End invert (inc. Type B outlet): 332mm

MDS125-A

Channel A - c/w Cell Bars, Structural/Locating Bars & Concrete Tiles



Channel Extension A

- **Channel A is compatible with Primary End, Primary Central, Primary Tee and Primary 90 products only**
- 125mm internal width
- 2,016mm overall length
- Start invert: 102mm
- End invert: 115mm

MDS125-B

Channel B - c/w Cell Bars, Structural/Locating Bars & Concrete Tiles



Channel Extension B

- **Channel B is compatible with Channel A only**
- 125mm internal width
- 2,016mm overall length
- Start invert: 88mm
- End invert: 102mm

MDS125-C

Channel C - c/w Cell Bars, Structural/Locating Bars & Concrete Tiles



Channel Extension C

- **Channel C is compatible with Channel B only**
- 125mm internal width
- 2,046mm overall length
- Start invert: 75mm
- End invert: 88mm

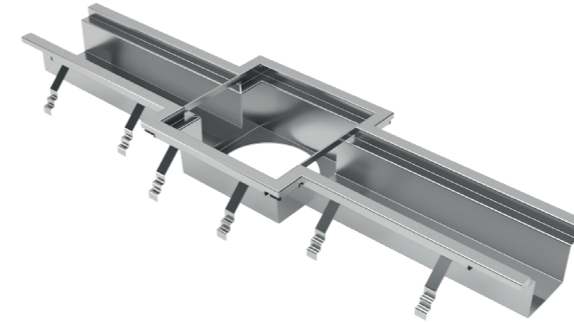
Drain Channels

Features:

- Manufactured from 2mm 304 stainless steel
- Internal radiused corners and seamless joints in line with EHEDG guidance

MDS125-PC

Primary Central - c/w Cell Bars, Structural/Locating Bars & Concrete Tiles

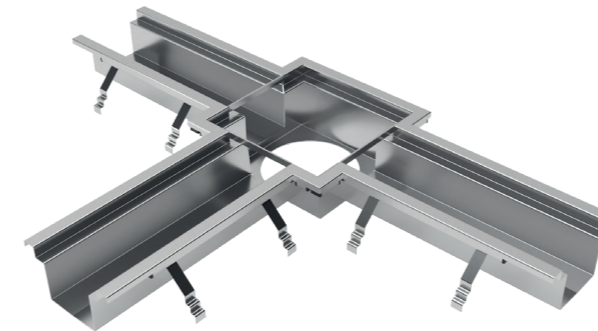


Primary Central

- **Connects with Channel A only**
- 125mm internal width
- 1,332mm overall length
- Start invert: 115mm
- End invert (inc. Type A outlet): 437mm
- End invert (inc. Type B outlet): 332mm

MDS125-PT

Primary Tee - c/w Cell Bars, Structural/Locating Bars & Concrete Tiles

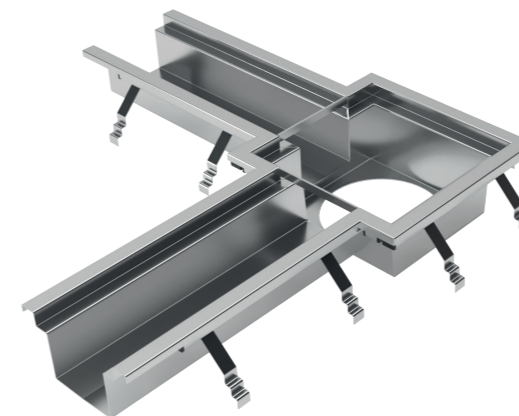


Primary Tee

- **Connects with Channel A only**
- 125mm internal width
- 1,332mm x 848mm overall lengths
- Start invert: 115mm
- End invert (inc. Type A outlet): 437mm
- End invert (inc. Type B outlet): 332mm

MDS125-P90

Primary 90° - c/w Cell Bars, Structural/Locating Bars & Concrete Tiles



Primary 90°

- **Connects with Channel A only**
- 125mm internal width
- 848mm x 848mm overall lengths
- Start invert: 115mm
- End invert (inc. Type A outlet): 437mm
- End invert (inc. Type B outlet): 332mm

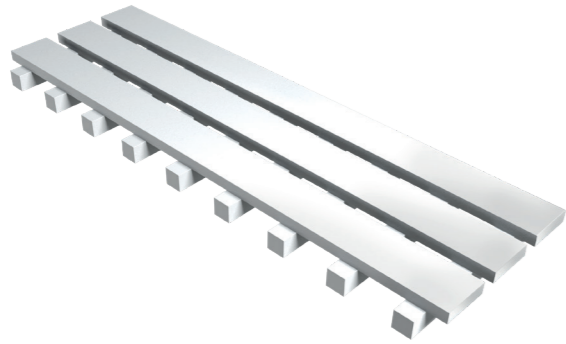
Drain Channel Covers

Features:

- Crevice-free design featuring seamless joints in line with EHEDG guidance
- Offered with market-leading load ratings, tested in accordance with BS EN 1433:2002
- Slip-resistant media blasted finish
- Manufactured in 500mm lengths for ease of removal and maintenance

MDT3B-HD

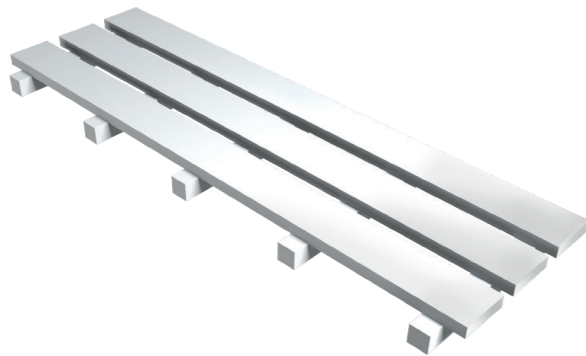
Drain Cover 3 Bar Flat (500mm) - Heavy Duty



Load Class (BS EN 1433): B125 (196kN)

MDT3B-SD

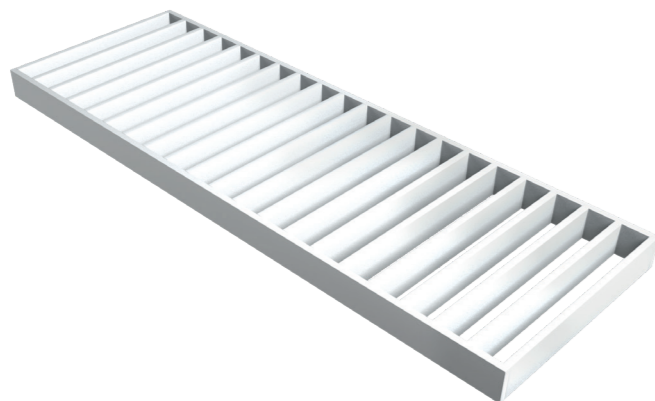
Drain Cover 3 Bar Flat (500mm) - Standard Duty



Load Class (BS EN 1433): B125 (132kN)

MDTL-SD

Drain Cover Ladder (500mm) - Standard Duty



Load Class (BS EN 1433): B125 (125kN)

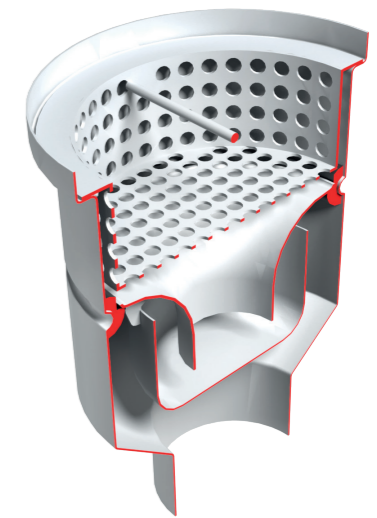
Outlets

Features:

- Self-draining design, removable 50mm foul air trap (FAT)
- Manufactured from 304 stainless steel
- Featuring internal radiused corners and seamless joints in line with EHEDG guidance
- Internal trash basket featuring $\varnothing 10\text{mm}$ perforations
- Bespoke injection-moulded EPDM seal, resistant to extreme heat and harsh chemicals
- 110mm diameter outlet

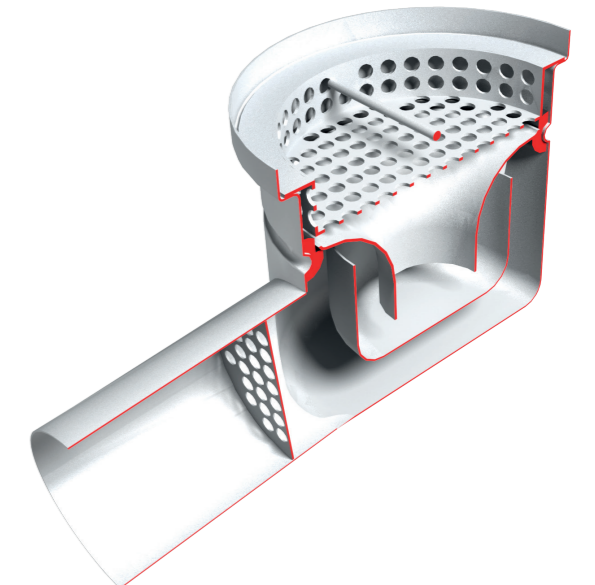
MDO110-A

Drain Outlet Type 'A' c/w 110mm Bottom Outlet incl Foul Air Trap (FAT) & Trash Basket



MDO110-B

Drain Outlet Type 'B' c/w 110mm Side Outlet incl Foul Air Trap (FAT) & Trash Basket

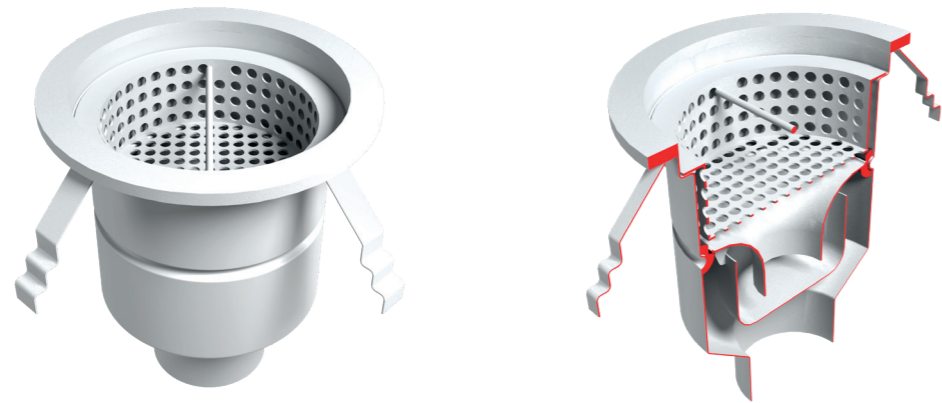


Gullies & Covers

Features:

- Crevice-free design featuring seamless joints in line with EHEDG guidance
- Manufactured from 304 stainless steel
- Slip-resistant media blasted finish
- Featuring key slots to aid removal and maintenance
- Covers offered with market-leading load ratings, tested in accordance with BS EN 1253

MSG110-AR Spot Gully Type 'A' c/w 110mm Bottom Outlet Round Flange incl Foul Air Trap (FAT) & Trash Basket



MSG110-AS Spot Gully Type 'A' c/w 110mm Bottom Outlet Square Flange incl Foul Air Trap (FAT) & Trash Basket

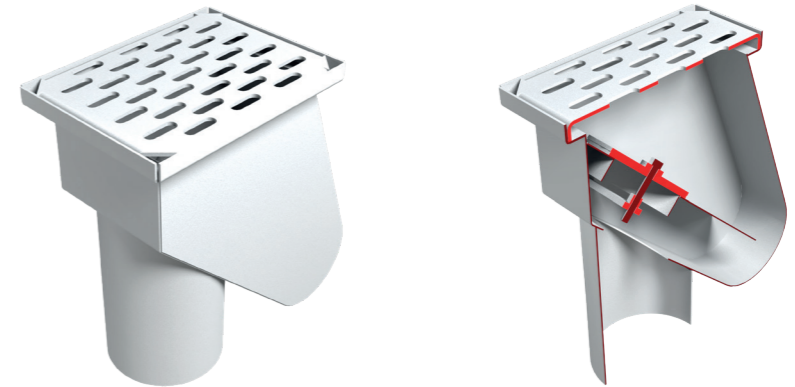


MSG110-BR Spot Gully Type 'B' c/w 110mm Side Outlet Round Flange incl Foul Air Trap (FAT) & Trash Basket



Gullies & Covers

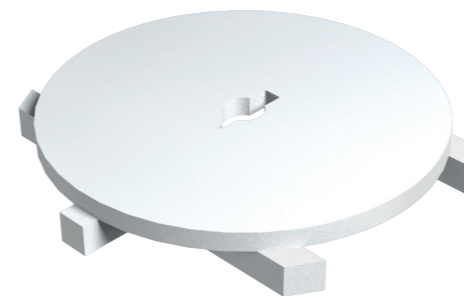
MSG110-C Spot Gully Type 'C' c/w 110mm Bottom Outlet incl Ladder Cover. Back Inlet Pipe Option Available



MSG110-D Spot Gully Type 'C' c/w 110mm Bottom Outlet incl Ladder Cover. Back Inlet Pipe Option Available

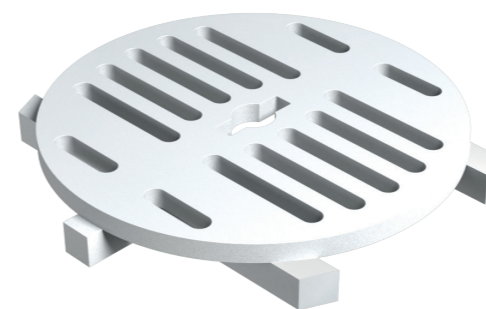


MGT-S Gully Cover - Solid



Load Class (BS EN 1253): N(250 kN)
 • Cover lifting key available

MGT-L Gully Cover - Ladder



Load Class (BS EN 1253): N(250 kN)
 • Cover lifting key available

Accessories

MFT

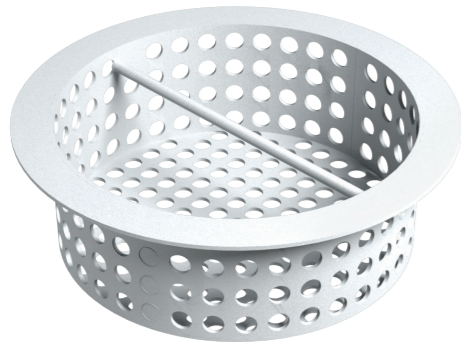
Foul Air Trap (FAT) - 304 Stainless Steel



- Compatible with all Modular Outlets and Gullies
- Hygienic, fully radiused internal corners and seamless joints

MTB-A

Trash Basket (Type A) - 304 Stainless Steel



- Compatible with all Type A (bottom) Modular Outlets and Gullies
- Features 10mm diameter perforations and an integrated handle to aid maintenance
- Hygienic seamless welded joints

MTB-B

Trash Basket (Type B) - 304 Stainless Steel



- Compatible with all Type B (side) Modular Outlets and Gullies
- Features 10mm diameter perforations and an integrated handle to aid maintenance
- Hygienic seamless welded joints

Installation Accessories

MCHB-700

Channel Hanger Bar (700) - Galvanised Steel c/w Cable Ties (3) & Fixings (2)



- Compatible with all Modular Drain Channels
- For drainage channels within narrow trenches (up to 540mm wide)
- Kit includes heavy duty cable ties and hammer fixings

MCHB-1250

Channel Hanger Bar (1250) - Galvanised Steel c/w Cable Ties (3) & Fixings (2)



- Compatible with all Modular Drain Channels
- For drainage channels within wide trenches (up to 1090mm wide)
- Kit includes heavy duty cable ties and hammer fixings

MS

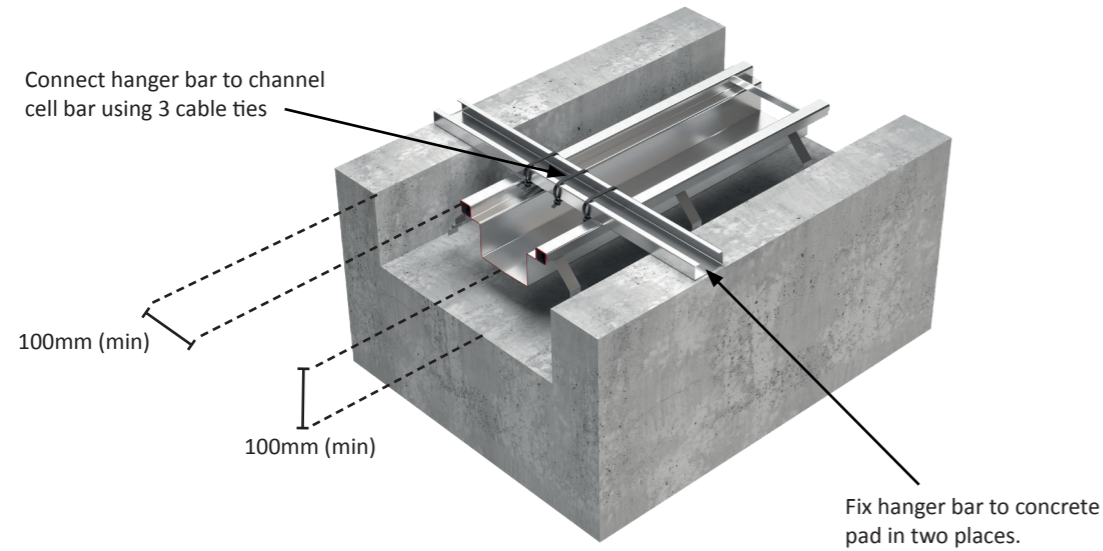
Stilt Kit - 304 Stainless Steel c/w Fixings (2)



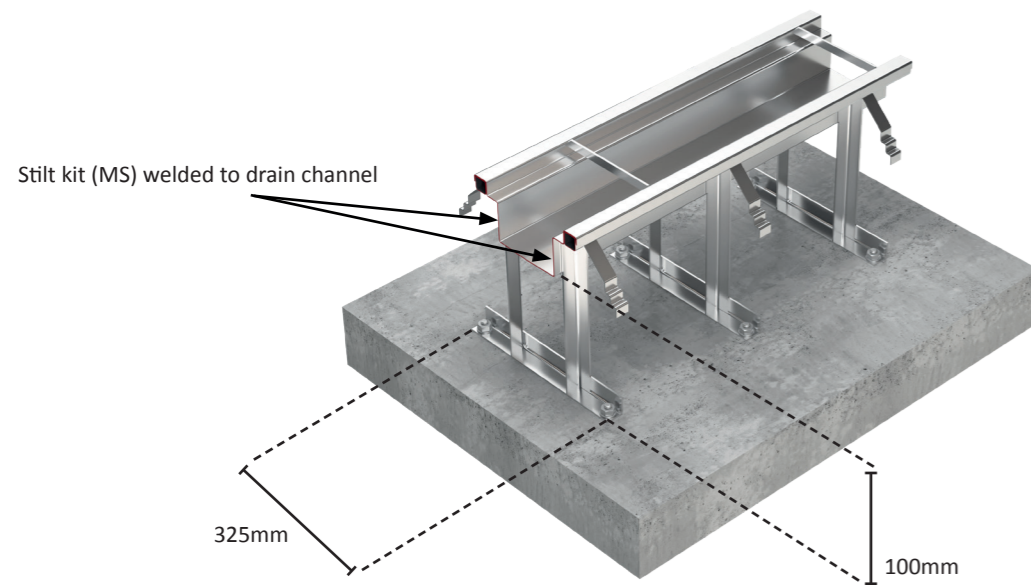
Compatible with all Modular Drain Channels.
Note this product requires welding and should be carried out by a competent person to ensure optimum performance.

Installation Guidance

Drainage installation using Hanger Bars



Drainage installation using Stilts



Bespoke Design & Installation – Total Responsibility in Action

We specialise in the high-volume production of sheet metal components, providing cost effective pricing and rapid delivery times. Our advanced manufacturing processes are optimised for large-scale production, ensuring consistent quality across all items. Clients benefit from our streamlined stocking system, allowing for efficient inventory management and reduced lead times.

For more information visit our website www.aspen-fabrications.co.uk



aspen

5A & 5B Bradley Park, High Holborn Road, Ripley DE5 3NW

+44 (0) 1773 851 997

enquiries@aspen-fabrications.co.uk

www.aspen-fabrications.co.uk



Certificate Number 13953
ISO 9001, ISO 14001,
ISO 45001