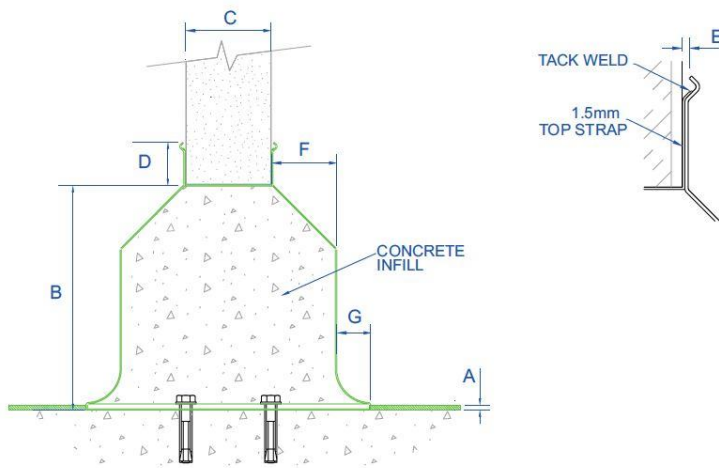


KE1 Wall Kerb | Internal Double Sided

Product Description

- Designed to support a hygienic wall panel above the floor level, which provides a hygienic interface between floor and wall, reducing the ingress of liquids.
- The kerb has a specially designed top fold for mastic seal retention.
- Suitable for use with a Uragard 6-9 mm resin finish.
- Customisable sizes on request



Key Benefits

The profile of this wall kerb is ideal for a building wanting to install a resin floor finish. The kerb should be installed on the base slab. The kerb is fully welded and made to suit sliding, personnel, roller doors, corners, tees, columns and wall ends. The kerb is easily removable if walls need to be removed, altered, or relocated.

Technical Specification

- 2mm DP1 240 grit stainless steel.
- Top fold to accept and protect mastic seal.
- Cementitious screed infill.
- Resin anchor fixings.
- Fully welded construction.
- Available in Grade 304 stainless steel as standard (BS EN 10088 1.4301)
- Grade 316 stainless steel is available as an option (BS EN 10088 1.4401)
- Galvanised Standard BS EN 10346:2015 DX51D+Z275

MODEL	REF	DIMENSIONS (mm)						
		A	B	C	D	E	F	G
DOUBLE INTERNAL	KE1	9	265	VARIABLE	50	2	75 OR VARIABLE	45 OR VARIABLE

Maintenance

Stainless steel equipment should be occasionally thoroughly checked for retained deposits and concentrated fluid build-up that causes corrosion.

Cleaning

Many factors affect the choice of cleaning method and frequency of its application. Suitable methods for stainless steel are water and steam; mechanical non-abrasive scrubbing; organic solvents and mild detergents.

Bespoke Design & Installation

At Aspen Fabrications, we continue to uphold the principle of “Total Responsibility” - a legacy built on quality, precision and complete customer confidence. While our stainless-steel drainage systems are designed with modularity at its core, we understand that not every project fits a standard template. That’s why we offer a bespoke design and installation service - a flexible, turnkey solution for clients who require tailored drainage systems for complex or high-performance environments. Visit our website for further details.